

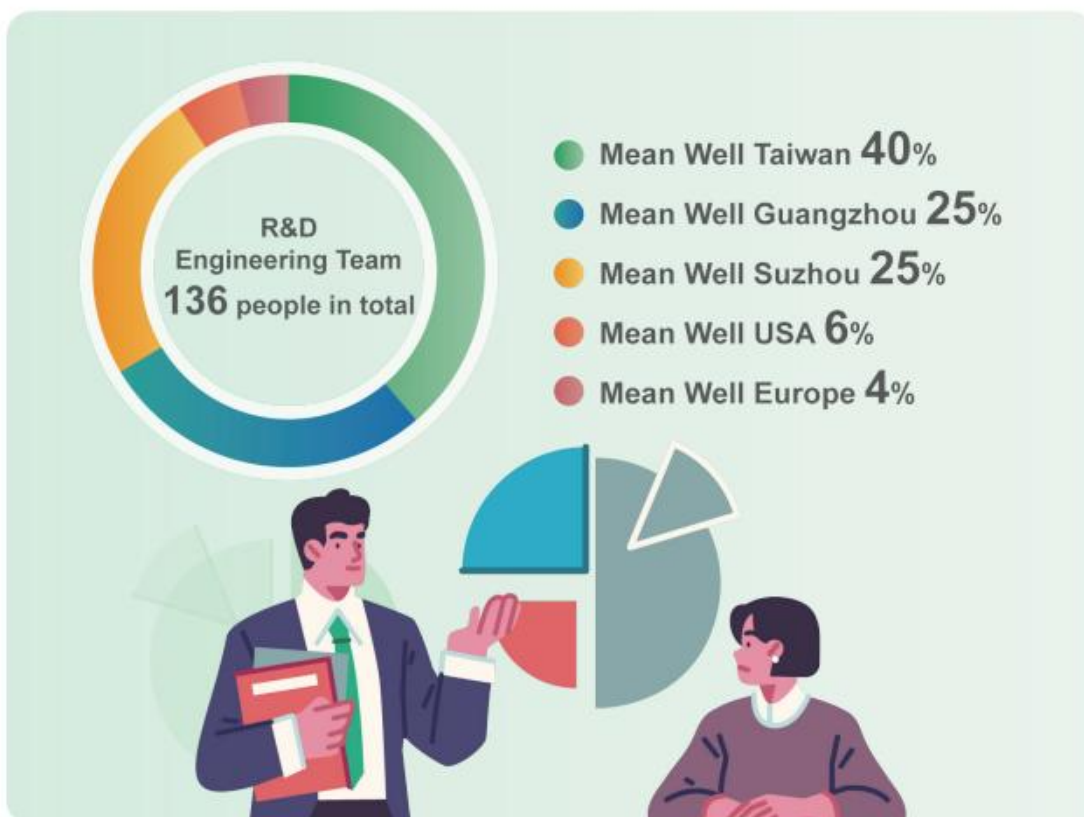


Advanced with the times of innovation and optimization, the mission of the SDG Group is to provide comprehensive and effective energy-saving solutions to customers worldwide.

Global R&D Engineering Team

The global headquarters is located in New Taipei Industrial Park in Taiwan. Currently, it has 3 R&D centers, respectively in New Taipei City (Taiwan), Guangzhou (China), and Suzhou (China). It also has engineering technology centers in California (USA), and the Netherlands (Europe). According to statistics, by the end of 2022, globally there were 136 full-time R&D engineers.

Endless innovation and improvement is one of MEAN WELL's corporate missions. Therefore, MEAN WELL has a strong sense of mission for innovative R&D and talent cultivation in the power supply industry. In addition to cultivating internal talent and recruiting new blood externally, MEAN WELL also stimulates innovative energy and creativity in the field of power supply design through industry-academia cooperation, thereby enhancing the Company's technological breakthroughs and innovations. As of 2022, our R&D engineering team has a total of 136 people, and the distribution of the number of people in each region is as follows:



Innovative Development

MEAN WELL develops new models every year, and has launched more than 11,350 standard models by the end of 2022. The products are widely used, including LED signage & lighting, industrial automation & industrial control, information & communication & commercial, medical, transportation and green energy industry, etc. The products fully comply with international safety regulations, saving customers time and cost of new product development and verification, and then seizing market opportunities. In addition to developing thinner, shorter and more efficient models to meet market applications, the Company is also continuing to develop high niche product lines.



Number of Patents

The Taiwan Intellectual Property Management Standards (TIPS) was introduced in 2015, and in comparison with the standardized operation mode of the ISO quality management system an intellectual property management system that complies with TIPS specifications was established to effectively use Company resources, maintain intellectual property, and enhance Company competitiveness. By 2022, 127 patent certificates at home and abroad have been obtained, and the patent content focuses on efficiency improvement and professional technical solutions. In 2021, the cumulative target number of patents was set at 100, with a success rate of 108%. The original cumulative target of 2025 was 120, which was reached in 2022. The number of patents we have obtained in the past five years is as follows:

Number of Patents

